

CANutillo CAN!

Your voice, their future.

January 6, 2024





Vision

LEAD today. IMPACT tomorrow.

Mission

We provide Equitable Opportunities to ensure our future-ready students are empowered to Explore, Learn, Grow, and Excel.

Tasks

The Facilities Assessment Taskforce will help CISD determine the appropriate approach to school infrastructure and enrollment loss and make community-based recommendations to the Board of Trustees.

Canutillo ISD Snapshot

Students:

5,861

Employees

1,005

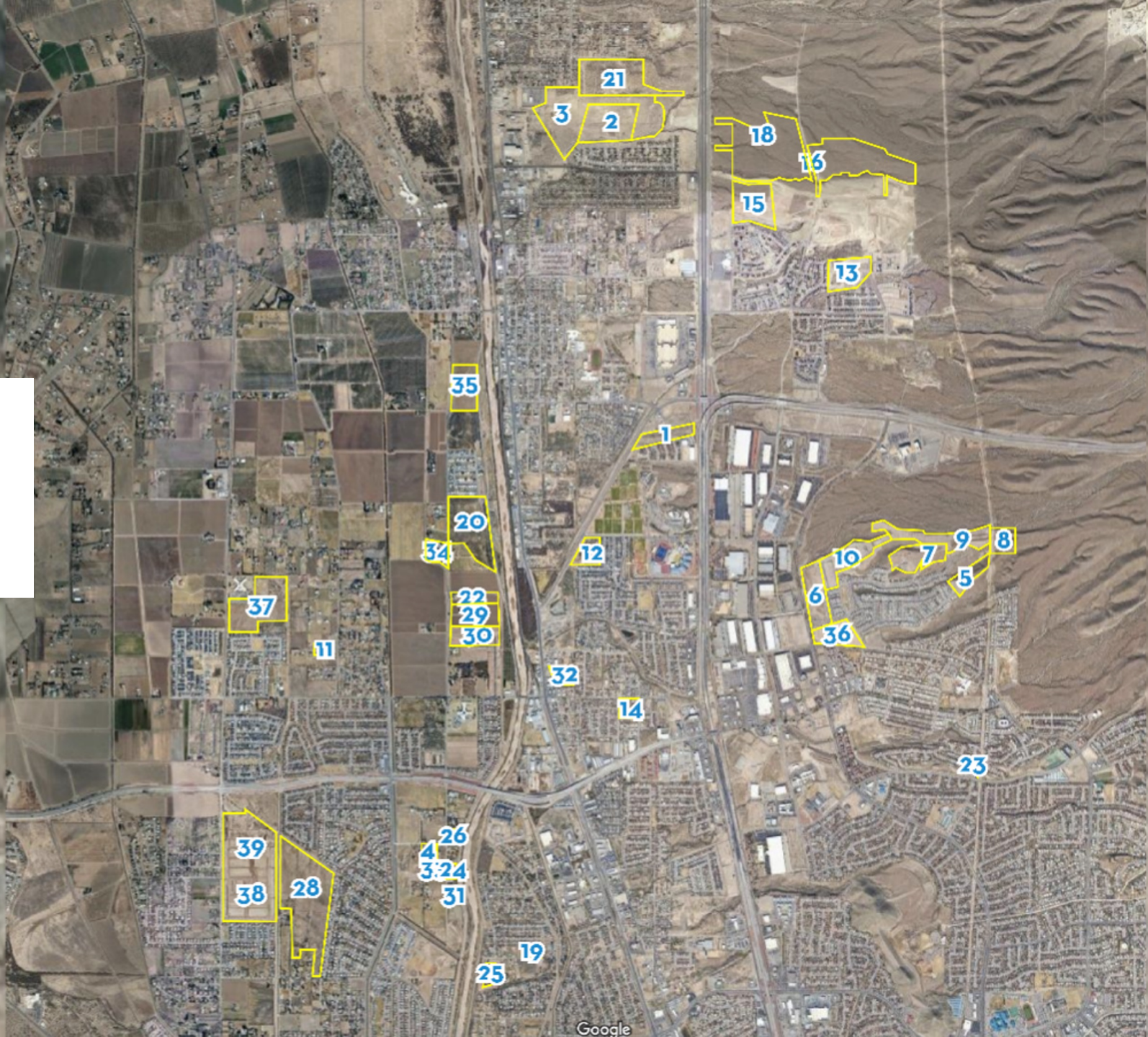
Schools & Facilities

- 1 Comprehensive High School
- 1 Early College High School
- 2 Middle Schools
- 6 Elementary Schools
- Lone Star Building
- 1 Administrative Building
- 1 Transportation Hub

Canutillo ISD Demographics

- Canutillo region is challenging far East Side for rapid residential and commercial development in El Paso County.
- Canutillo region experiencing 20% growth, on par with rest of Texas and outpacing El Paso County average.
- Canutillo ISD is one of two El Paso County school districts with natural growth potential.
- More than 3,100 homes under construction within Canutillo ISD boundaries.
- Additional 5,000 homes plotted and planned in new neighborhoods.
- Birth rate of 3,400 is highest in the region.

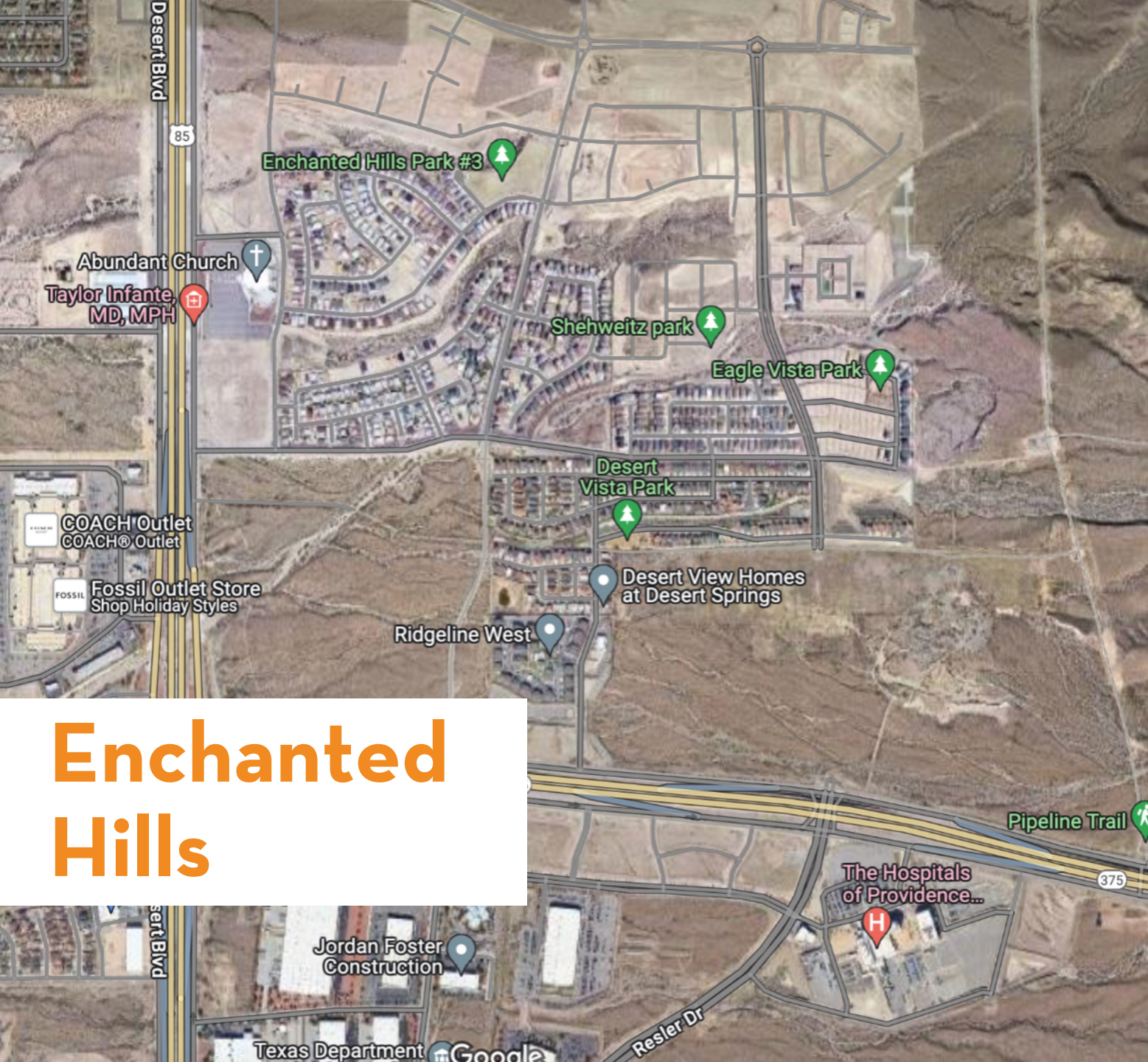
Canutillo ISD Growth Trends





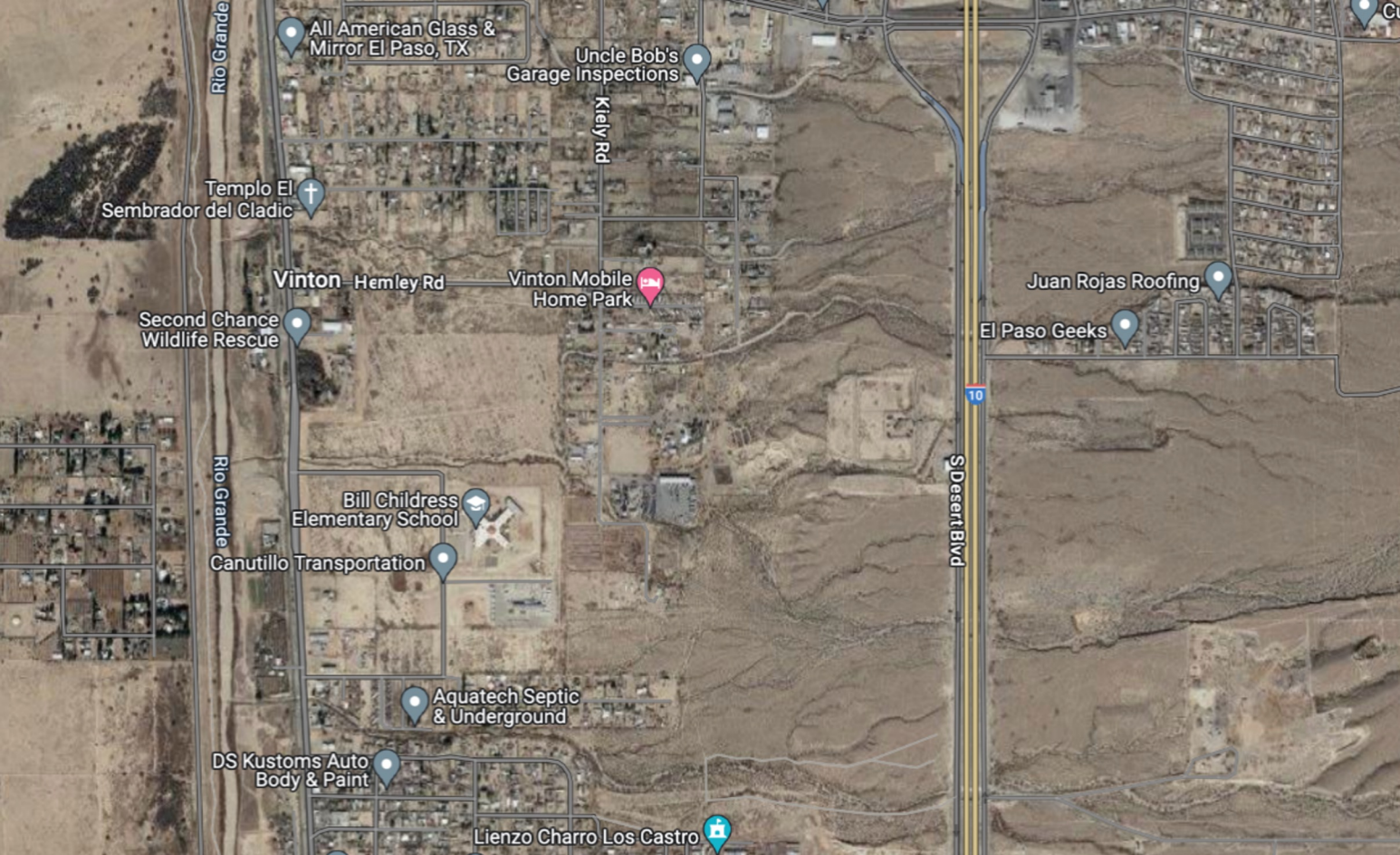
Cimarron





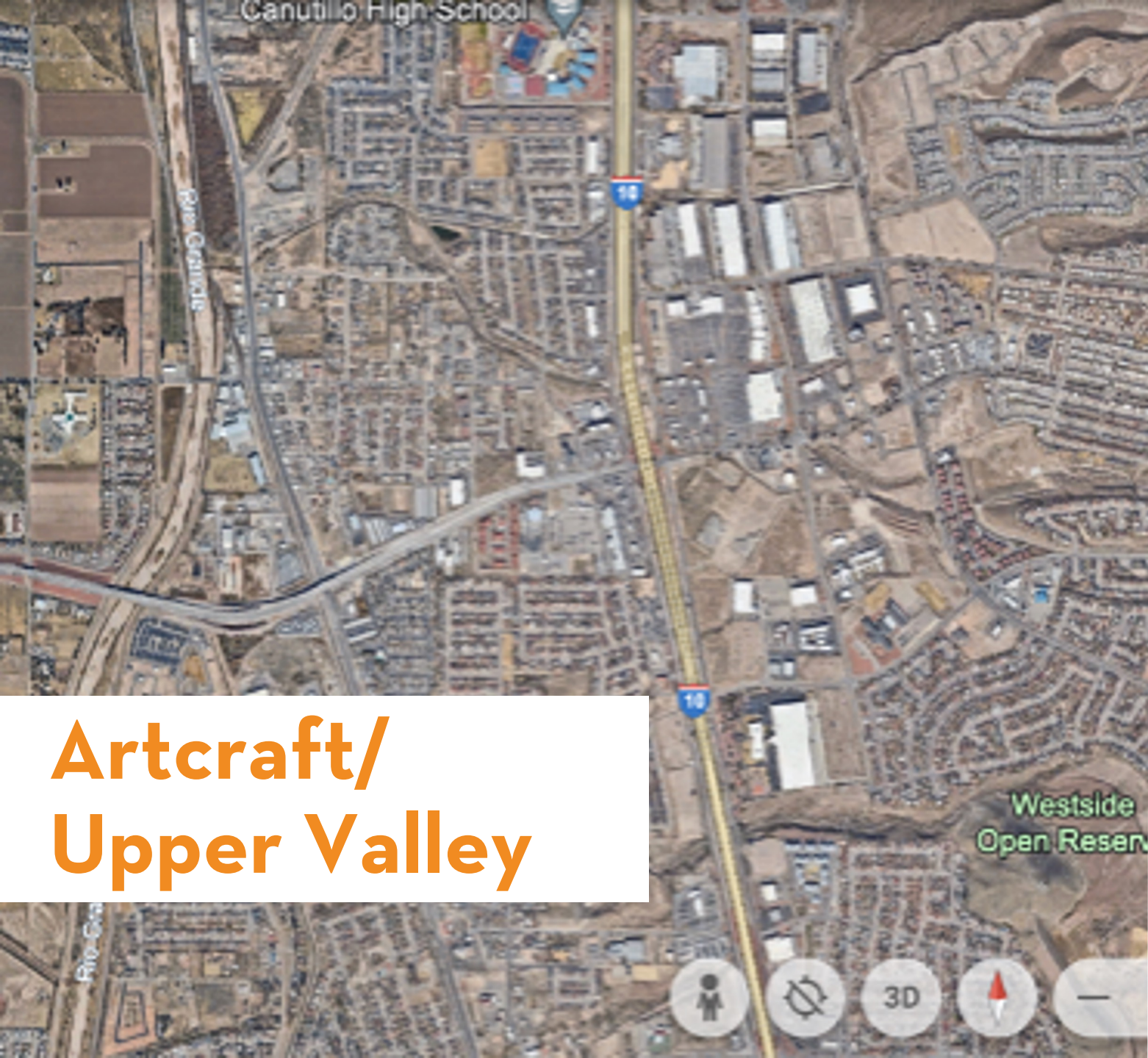
Enchanted Hills





Vinton/ Canutillo Heights



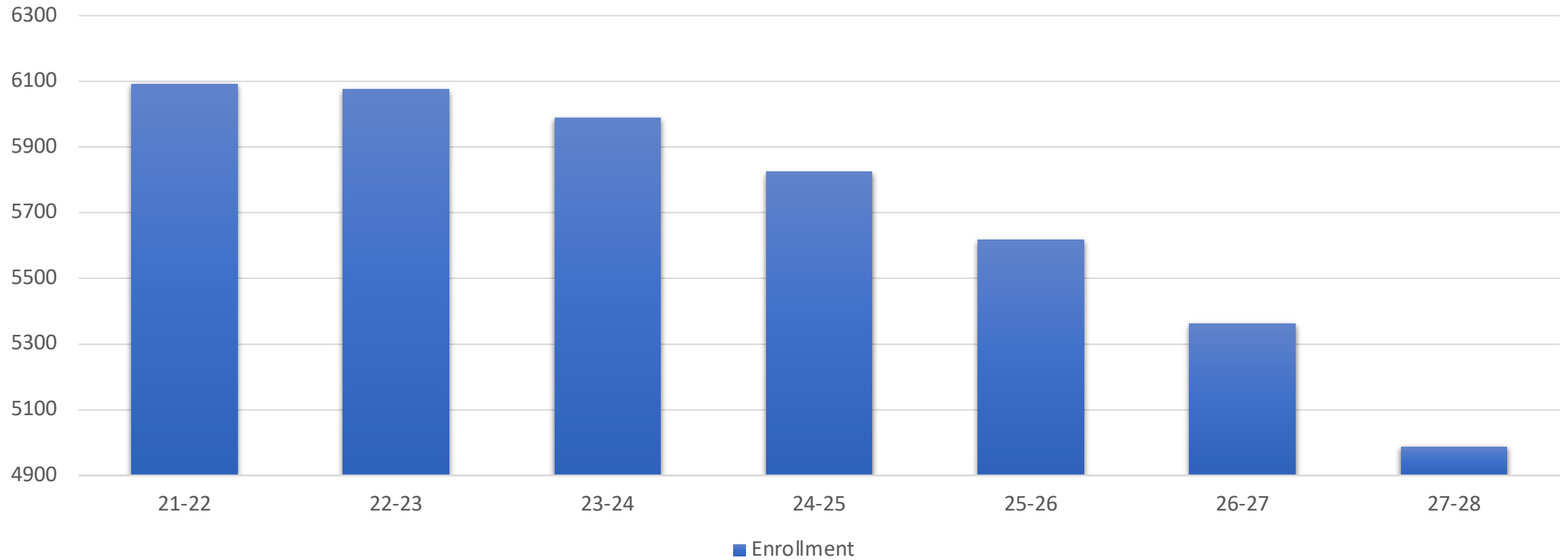


Artcraft/ Upper Valley



Enrollment Trends

Student Enrollment



The background features a large, faint, circular seal of the Camarillo Independent School District. The seal contains an eagle with spread wings, a star, and the text "CAMARILLO INDEPENDENT SCHOOL DISTRICT" and "EST. 1959".

**~\$27
million**

Annual Revenue Loss to CISD by 2028

Vision

LEAD today. IMPACT tomorrow.

Mission

We provide Equitable Opportunities to ensure our future-ready students are empowered to Explore, Learn, Grow, and Excel.

Mission and Vision

**What do the CISD
Mission & Vision mean?**

**How do you see it reflected in
our current learning spaces?**

Future Meetings

- **January 10:** Workshop with Board of Trustees
- **January 17:** Committee Meeting.
- **January 24:** Committee Meeting.
- **February 7:** Workshop with Board of Trustees to discuss committee findings.
- **February 13:** Board of Trustees meets to make final determination.

Assumptions

Before I went on the tour

Reality

While I'm on the tour

Clarify

After the tour